



HEIGHT OF CMU BLOCK WALL; 43 INCHES FROM TOP OF CONCRETE FOUNDATION TO BOTTOM OF LINTEL

1 HEIGHT OF CMU BLOCK WALL
R-100 NOT TO SCALE



STAINING DUE TO WATER INFILTRATION ON INTERIOR WALL

INTERIOR FOUNDATION STICK UP FROM TOP OF SLAB IS APPROX. 1 FOOT

2 TYPICAL INTERIOR OF WAREHOUSE
R-100 NOT TO SCALE



NTH Consultants, Ltd.

Infrastructure Engineering
Environmental Services
Facilities Engineering

www.nthconsultants.com

Northville, MI Lansing, MI
Detroit, MI Grand Rapids, MI
Livonia, MI (Laboratory)

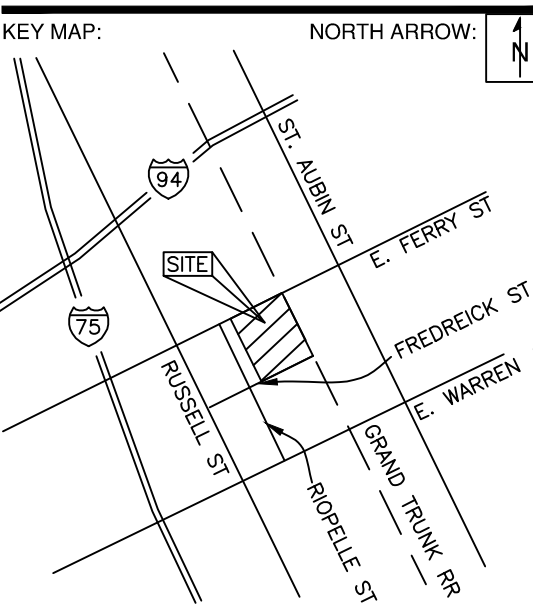
3 WORKING DAYS
**BEFORE YOU DIG
CALL MISS DIG**
1-800-482-7171
For free location of public utility lines.
ALTERNATE NUMBER 0115
COLOR CODES FOR UTILITY LOCATING:

Yellow	Oil, Gas	Blue	Water
Orange	Phone & Cable	Green	Storm Drain
Red	Electric	Brown	Sewer
		Pink	Sanitary

IF YOU ARE GOING TO WORK NEAR OVERHEAD WIRES ... CALL MISS DIG



SEAL/STAMP:



REVISION BLOCK	
REV	DATE: DESCRIPTION

SUBMITTAL LOG	
DATE	PACKAGE NAME
2023-12-19	75% DRAWINGS
2024-03-06	90% DRAWINGS
2025-01-31	ISSUED FOR BID

PROJECT NAME:
**MDOT DETROIT GARAGE
STORM SEWER
RECONSTRUCTION**

PROJECT LOCATION:
**1500 E. FERRY STREET
DETROIT, MICHIGAN**

DESIGNED BY:	NTH PROJECT NO.:
MAA	23001451
DRAWN BY:	SHEET SIZE:
MAA	ARCH D (24"x36")
CHECKED BY:	DATE:
JBS	08/19/2024
CAD FILE NAME:	
23001451	

SHEET TITLE:
TYPICAL DEFECT PHOTOS

SHEET NUMBER:

R-100

ALTERNATE 1

DTMB FILE NO. 591_22274.MNB



STATE OF MICHIGAN
DEPARTMENT OF TECHNOLOGY, MANAGEMENT AND BUDGET
STATE FACILITIES ADMINISTRATION
DESIGN AND CONSTRUCTION DIVISION
ADAM P. LACH, RA, DIRECTOR



1 TYPICAL BROKEN LINTEL
R-101 NOT TO SCALE



2 TYPICAL DETERIORATED SEALANT
R-101 NOT TO SCALE



3 TYPICAL BROKEN CMU BLOCK
R-101 NOT TO SCALE



4 TYPICAL SPALLED CONCRETE FOUNDATION
R-101 NOT TO SCALE



NTH Consultants, Ltd.
Infrastructure Engineering
Environmental Services
Facilities Engineering
www.nthconsultants.com

Northville, MI Lansing, MI
Detroit, MI Grand Rapids, MI
Livonia, MI (Laboratory)

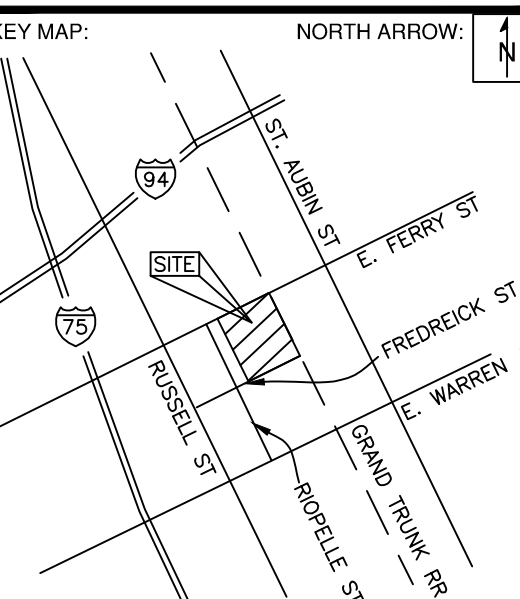
3 WORKING DAYS
**BEFORE YOU DIG
CALL MISS DIG**
1-800-482-7171
For free location of public utility lines.
ALTERNATE NUMBER 0111
COLOR CODES FOR UTILITY LOCATING:

Yellow	Oil & Gas	Blue	Water
Orange	Phone & Cable	Green	Storm Drain
Red	Electric	Brown	Sewer
		Pink	Sanitary

IF YOU ARE GOING TO WORK NEAR OVERHEAD WIRES - CALL MISS DIG



SEAL/STAMP:



REVISION BLOCK	
REV	DATE: DESCRIPTION

SUBMITTAL LOG	
DATE	PACKAGE NAME
2023-12-19	75% DRAWINGS
2024-03-06	90% DRAWINGS
2025-01-31	ISSUED FOR BID

PROJECT NAME:
**MDOT DETROIT GARAGE
STORM SEWER
RECONSTRUCTION**

PROJECT LOCATION:
**1500 E. FERRY STREET
DETROIT, MICHIGAN**

DESIGNED BY:	NTH PROJECT NO.:
MAA	23001451
DRAWN BY:	SHEET SIZE:
MAA	ARCH D (24"x36")
CHECKED BY:	DATE:
JBS	08/19/2024
CAD FILE NAME:	
23001451	

SHEET TITLE:
TYPICAL DEFECT PHOTOS

SHEET NUMBER:

R-101

DTMB FILE NO. 591_22274.MNB



STATE OF MICHIGAN
DEPARTMENT OF TECHNOLOGY, MANAGEMENT AND BUDGET
STATE FACILITIES ADMINISTRATION
DESIGN AND CONSTRUCTION DIVISION
ADAM P. LACH, RA, DIRECTOR

ALTERNATE 1



NTH Consultants, Ltd.

Infrastructure Engineering
Environmental Services
Facilities Engineering
www.nthconsultants.com

Northville, MI Lansing, MI
Detroit, MI Grand Rapids, MI
Livonia, MI (Laboratory)

3 WORKING DAYS BEFORE YOU DIG CALL MISS DIG • 1-800-482-7171

For the location of public utility lines. ALTERNATE NUMBER 0113. COLOR CODES FOR UTILITY LOCATING:

Yellow	Oil & Gas	Blue	Water
Orange	Phone & Cable	Green	Storm Drain
Red	Electric	Pink	Surveying

IF YOU ARE GOING TO WORK NEAR OVERHEAD WIRES ... CALL MISS DIG



SEAL/STAMP:



REVISION BLOCK	
REV	DATE: DESCRIPTION

SUBMITTAL LOG	
DATE	PACKAGE NAME
2023-12-19	75% DRAWINGS
2024-03-06	90% DRAWINGS
2025-01-31	ISSUED FOR BID

PROJECT NAME:
MDOT DETROIT GARAGE STORM SEWER RECONSTRUCTION

PROJECT LOCATION:
**1500 E. FERRY STREET
DETROIT, MICHIGAN**

DESIGNED BY: MAA	NTH PROJECT NO.: 23001451
DRAWN BY: MAA	SHEET SIZE: ARCH D (24"x36")
CHECKED BY: JBS	DATE: 08/19/2024
CAD FILE NAME: 23001451	

SHEET TITLE:
GENERAL NOTES

SHEET NUMBER:

R-102

LIST OF REPAIR ITEMS:

ITEM	DESCRIPTION	DETAIL (S)	*QUANTITIES	SPEC. SECTION (S)
1	REMOVE & REPLACE DETERIORATED AND/OR CRACKED CMU BLOCKS	2/R-108	140 EA	04 0120.91
2	REPOINT DETERIORATED AND/OR CRACKED MORTAR JOINTS AT CMU BLOCKS	5/R-108	10500 LF	04 0120.91
3	REMOVE AND REPLACE BROKEN LINTELS (48" X 8" X 4")	N/A	70 EA	N/A
4	REMOVE SEALANT AT THE SIDING AND WALL INTERFACE AND INSTALL Z-FLASHING	3/R-108	1128 LF	07 9213
5	REMOVE AND REPLACE SEALANT AT VERTICAL EXPANSION JOINT	1/R-108	185 LF	07 9213
6	REMOVE AND REPLACE SEALANT AT EXPANSION JOINT ALONG BUILDING PERIMETER	4/R-108	628 LF	07 9213
7	INSTALL CLEAR PENETRATING SEALER ON CMU BLOCK WALL	1/R-109	7720 SF	07 0713
8	INSTALL TAR-BASED WATERPROOFING ON CONCRETE FOUNDATION	1/R-109	1340 SF	07 1416
9	PATCH CRACKED AND SPALLED CONCRETE ON EXPOSED FOUNDATION AT BUILDING PERIMETER	6/R-108	25 SF	03 3130

*FOR GENERAL INFORMATION ONLY. BASED ON THE DESIGN PLANS, AND FIELD OBSERVATION, AND MEASUREMENTS TAKEN AT THE TIME OF THE PRE-BID MEETING / INSPECTION, THE CONTRACTOR IS RESPONSIBLE FOR DETERMINING THE QUANTITIES TO USE FOR BIDDING PURPOSES.

A. GENERAL REQUIREMENTS

- ELEVATIONS AND DIMENSIONS OF EXISTING STRUCTURES ARE BASED ON PRELIMINARY INSPECTIONS. AS SUCH, FIELD VERIFY ALL DIMENSIONS. THE CONTRACTOR IS RESPONSIBLE FOR VERIFYING ALL DIMENSIONS AND ELEVATIONS FOR EACH WORK AREA BEFORE SELECTIVE DEMOLITION, ORDERING PRODUCT, ETC. IMMEDIATELY NOTIFY THE OWNER REPRESENTATIVE OF ANY CONFLICT THAT WILL AFFECT WORK PROGRESS.
- DETAILS OF EXISTING STRUCTURES, SUBSURFACES, SURFACES, AND/OR EQUIPMENT INCLUDED IN THESE PLANS ARE CONCEPTUAL AND MAY NOT BE THE SAME AS ENCOUNTERED IN THE FIELD. THEY ARE BASED ON AVAILABLE INFORMATION AT THE TIME OF PREPARATION OF THESE DOCUMENTS AND NON-DESTRUCTIVE INVESTIGATIONS IN THE FIELD. NTH HAS CONDUCTED ALL REASONABLE INVESTIGATION INTO THE FIELD CONDITIONS OF THE STRUCTURE TO PROVIDE THE CONTRACTOR WITH ACCURATE INFORMATION. ANY ERRORS OR OMISSIONS ARE UNINTENTIONAL AND THE CONTRACTOR IS ADVISED TO DOCUMENT SUCH VARIATIONS AND SUBMIT TO OWNER FOR REVIEW VIA PHOTOS, SKETCHES, OR OTHER APPROPRIATE MEANS.
- NOTIFY OWNER'S REPRESENTATIVE AT LEAST 24 HOURS BEFORE THE START OF WORK.
- SUBMIT A WORK PLAN AND SCHEDULE FOR REVIEW PRIOR TO STARTING WORK AND WILL NOTIFY THE OWNER AND OWNER'S REPRESENTATIVES OF ANY DEVIATIONS FROM THAT PLAN OR SCHEDULE AS SOON AS THEY ARE APPARENT.
- ABIDE BY ALL OWNER'S SAFETY AND CONDUCT REGULATIONS WHILE ON SITE.
- CONTRACTOR IS RESPONSIBLE FOR ALL WORK INCIDENTAL TO OR INDICATED IN THESE PLANS AND PERFORMED OR CONDUCTED BY THEMSELVES, THEIR SUB-CONTRACTORS, OR THEIR AGENTS.
- CONTRACTOR IS RESPONSIBLE FOR MEANS, METHODS, PROCEDURES AND SEQUENCING OF WORK.
- PROVIDE FIRE WATCH COMPLYING WITH THE OWNER'S REQUIREMENTS DURING ALL HOT WORK SUCH AS CUTTING, WELDING, GRINDING, ETC.
- PROTECT OWNER PROPERTY NOT INCLUDED IN THIS WORK BUT IN THE IMPACTED AREA FROM DAMAGE DURING CONSTRUCTION ACTIVITIES.
- MONITOR THE STRUCTURES FOR SIGNS OF DISTRESS DURING ALL PHASES OF WORK AND NOTIFY THE ENGINEER IMMEDIATELY SHOULD SIGNS OF DISTRESS BE FOUND.
- ENSURE ALL WORK IS CONDUCTED WITHIN THE REQUIREMENTS OF APPLICABLE LOCAL, STATE, AND FEDERAL CODES AND LAWS.
- REPLACE IN KIND, ANY EQUIPMENT, MATERIALS OR PROPERTY DAMAGED BY THE CONTRACTOR OR THEIR AGENTS AT NO ADDITIONAL CHARGE TO OWNER.
- NOTIFY THE ENGINEER AND THE OWNER OF EXISTING CONDITIONS THAT REQUIRE MODIFICATIONS TO THE DESIGN OF THE PROPOSED CONSTRUCTION.
- MAINTAIN A TIDY WORK AREA. ENSURE REFUSE AND SCRAPS WITHIN WORK AREAS ARE ROUTINELY DISPOSED OF PROPERLY. WORK AREA SHOULD BE CLEAN AT THE END OF EACH SHIFT AS MESSY WORK AREAS MAY LEAD TO ACCIDENTS.

B. SELECTIVE DEMOLITION

- PERFORM WORK IN ACCORDANCE WITH SPECIFICATIONS SECTION 02 4116.
- COORDINATE DEMOLITION WORK WITH OWNER TO MINIMIZE DISRUPTIONS OF FACILITY OPERATIONS.
- MEET WITH OWNER AND ENGINEER PRIOR TO BEGINNING WORK TO DETERMINE RESPONSIBILITIES OF REMOVAL OF SPECIFIC PIECES OF EQUIPMENT NOTED OR OTHERWISE.
- VERIFY PREFERRED/REQUIRED SEQUENCE OF VARIOUS TASKS WITH OWNER AND VENDORS BEFORE STARTING WORK.
- COORDINATE SEQUENCE OF WORK, SCHEDULE, UTILITY SHUTDOWNS, STAGING AREAS, ETC., WITH OWNER AND ENGINEER FOR ALL EQUIPMENT INVOLVED IN OR AFFECTED BY THE CONTRACTOR'S WORK.
- CONTRACTOR TO VERIFY ALL FIELD CONDITIONS AND ITEMS NECESSARY TO BE DEMOLISHED.
- SUBMIT A DEMOLITION PLAN AND SCHEDULE FOR REVIEW PRIOR TO STARTING WORK AT OWNER REQUEST.
- VERIFY LOCATIONS OF CONCEALED EXISTING UTILITIES AND CONDUITS BEFORE START OF DEMOLITION WORK.
- EXISTING/REMOVED EQUIPMENT, TO BE TURNED OVER TO OWNER, SHALL BE CAREFULLY REMOVED, HANDLED, AND STORED TO PREVENT DAMAGE FOR POSSIBLE REUSE, UNLESS DIRECTED OTHERWISE.
- FOR SELECTIVE DEMOLITION OF CONCRETE, PNEUMATIC HAMMERS OR OTHER METHODS CAUSING EXCESSIVE VIBRATIONS TO THE BUILDING STRUCTURE ARE NOT PERMITTED.

C. SUBMITTALS

- ANY CHANGES, SUBSTITUTIONS, OR DEVIATIONS FROM THE ORIGINAL CONTRACT DRAWINGS SHALL BE CLOUDED BY THE MANUFACTURER OR FABRICATOR. ANY CHANGES, SUBSTITUTIONS, OR DEVIATIONS THAT ARE CLOUDED OR FLAGGED BY SUBMITTING PARTIES SHALL NOT BE CONSIDERED APPROVED AFTER OWNER'S REVIEW, UNLESS SPECIFICALLY NOTED ACCORDINGLY BY OWNER.
- ALLOW A MINIMUM OF SEVEN (7) WORKING DAYS FOR REVIEW OF SUBMITTALS, SHOP DRAWINGS, AND / OR SUBSTITUTION REQUESTS BY THE ENGINEER OR OWNER.

D. PROPRIETARY EQUIPMENT

- PROPRIETARY EQUIPMENT INDICATED ON THESE PLANS ARE INTEGRAL TO THE DESIGN. SUBSTITUTIONS MAY REQUIRE ALTERATIONS TO ONE OR MORE COMPONENTS OF THE DESIGN. DESIGNER MUST BE NOTIFIED SHOULD SUBSTITUTIONS BE REQUIRED.
- CONTRACTOR IS RESPONSIBLE FOR PROCUREMENT OF THESE ITEMS. CONTRACTOR IS RESPONSIBLE FOR ALL MANUFACTURER REQUIRED DIMENSIONS USED FOR FABRICATION OF PROPRIETARY ITEMS.
- OWNER WILL RECEIVE A COPY OF ALL MAINTENANCE, WARRANTY AND CARE LITERATURE PROVIDED BY THE MANUFACTURER. OWNER WILL BE MADE AWARE OF ANY REQUIRED MAINTENANCE AND THE REQUIRED MAINTENANCE INTERVALS IF APPLICABLE.

D. MASONRY RESTORATION

- SEE SPECIFICATIONS SECTION 04 0120.91 FOR MASONRY RESTORATION.
- COLD WEATHER AND HOT WEATHER CONSTRUCTION: COMPLY WITH MSJC FOR REQUIREMENTS DURING PREPARATION, DURING CONSTRUCTION, AND FOR PROTECTION.
- MASONRY MORTAR MATERIALS
 - PORTLAND CEMENT: ASTM C150, TYPE I OR II. PROVIDE NATURAL COLOR OR WHITE CEMENT AS REQUIRED TO PRODUCE MORTAR COLOR TO MATCH ADJACENT EXISTING MORTAR.
 - HYDRATED LIME: ASTM C207, NON-AIR-ENTRAINED, TYPE S.
 - SAND: SIMILAR IN SIZE AND GRADATION TO EXISTING MORTAR SAND; ASTM C144 OTHERWISE.
 - CHEMICAL ADDITIVES: NONE PERMITTED WITHOUT THE EXPRESS WRITTEN PERMISSION OF THE ENGINEER.
 - WATER: CLEAN, CLEAR AND SUITABLE FOR DRINKING, FREE OF CHEMICALS THAT MAY BE DELETERIOUS TO MASONRY AND MORTAR.
- MORTAR MIXES
 - GENERAL: DO NOT ADD ADMIXTURES INCLUDING COLORING PIGMENTS, AIR-ENTRAINING
 - AGENTS, ACCELERATORS, RETARDERS, WATER REPELLENT AGENTS, ANTIFREEZE COMPOUNDS, OR OTHER ADMIXTURES, UNLESS SPECIFICALLY APPROVED IN WRITING BY ENGINEER.
 - REPOINTING MORTAR AND MORTAR FOR LAYING NEW UNITS: TYPE N MORTAR PER ASTM C270, PROPORTION SPECIFICATION. LIMIT CEMENTITIOUS MATERIALS TO PORTLAND CEMENT AND LIME. AIR ENTRAINMENT IS NOT PERMITTED.
- JOINT PREPARATION FOR REPOINTING
 - PRODUCE MORTAR COLOR TO MATCH ADJACENT EXISTING MORTAR. CUT OUT MORTAR JOINTS DESIGNATED FOR REPOINTING, REMOVING UNSOUND MORTAR UNTIL ONLY SOUND MATERIAL REMAINS; MINIMUM DEPTH 3/4" INCH AND MAXIMUM DEPTH 1 3/4 INCHES FROM THE BRICK OUTSIDE SURFACE. CUT OUT JOINTS TO A SQUARE PROFILE AND UNIFORM DEPTH; FURROW-SHAPED JOINTS ARE NOT ACCEPTABLE.
 - EMPLOY MORTAR REMOVAL METHODS THAT DO NOT DAMAGE MASONRY UNITS.
 - REMOVE LOOSE PARTICLES, DUST AND DEBRIS FROM JOINTS, USING AN OIL-FREE AIR JET OR A WATER STREAM.
- BATCHING REPOINTING MORTAR
 - PRODUCE MORTAR COLOR TO MATCH ADJACENT EXISTING MORTAR. DRY MIX SAND AND CEMENTITIOUS MATERIALS. ACCURATELY PROPORTION MIX MATERIALS BY VOLUME. PROVIDE CALIBRATED CONTAINERS AND SCALES AT SITE FOR PROPER PROPORTIONING.
 - ADD ONLY ENOUGH WATER TO PRODUCE A DAMP MIX THAT WILL RETAIN ITS SHAPE WHEN PRESSED INTO A BALL BY HAND.
 - MIX FOR AT LEAST THREE (3) AND NOT MORE THAN SEVEN (7) MINUTES IN A MECHANICAL MIXER. HAND MIXING IS NOT ACCEPTABLE.
 - PERMIT MIXED MORTAR TO STAND FOR A MINIMUM OF ONE (1) HOUR AND A MAXIMUM OF 1-1/2 HOURS FOR PRE-HYDRATION OF CEMENTITIOUS MATERIALS TO REDUCE SHRINKAGE.
 - ADD SUFFICIENT WATER TO BRING MORTAR TO PROPER CONSISTENCY FOR TUCKPOINTING, SOMEWHAT DRIER THAN MORTAR USED FOR LAYING MASONRY UNITS. MIX BY HAND FOR THREE (3) TO FIVE (5) MINUTES.
 - USE MORTAR WITHIN 2-1/2 HOURS OF ITS INITIAL MIXING. RETEMPER MORTAR WITHIN THIS TIME LIMIT AS NEEDED TO REPLACE EVAPORATED WATER BUT NOT AFTER MORTAR HAS BEGUN TO SET. DISCARD MORTAR THAT IS NOT USED WITHIN 2-1/2 HOURS OF INITIAL MIXING (1 TO 1-1/2 HOURS AFTER PRE-HYDRATION) AND PROPERLY DISPOSE OF OFF-SITE.
- APPLICATION OF REPOINTING MORTAR
 - PRODUCE MORTAR COLOR TO MATCH ADJACENT EXISTING MORTAR. USE A TUCKPOINTING TROWEL THAT IS SLIGHTLY NARROWER THAN THE MORTAR JOINTS BEING FILLED.
 - POINT HEAD JOINTS BEFORE POINTING BED JOINTS.
 - SPREAD MORTAR INTO JOINT IN APPROXIMATELY 1/4-INCH LAYERS. TIGHTLY COMPRESS EACH LAYER TO PREVENT VOIDS. FILL JOINTS TO THE OUTSIDE SURFACE OF THE BRICK UNITS.
 - WHEN MORTAR IS THUMBPRINT HARD, COMPACT JOINTS WITH A CONCAVE TOOL THAT IS WIDER THAN JOINT.
 - PROTECT FRESHLY PLACED MORTAR FROM SUN AND DRYING WINDS. WHEN AMBIENT TEMPERATURE EXCEEDS 100 DEGREES F, OR EXCEEDS 90 DEGREES F WITH WINDS IN EXCESS OF 8 MILES PER HOUR, COVER MASONRY WITH PLASTIC SHEETING OR APPLY A FINE WATER-FOG SPRAY FOR FOUR (4) DAYS.
- CLEANING
 - PRODUCE MORTAR COLOR TO MATCH ADJACENT EXISTING MORTAR. REMOVE LOOSE MORTAR PARTICLES WITH A SOFT BRISTLE BRUSH AFTER MORTAR HAS DRIED BUT NOT HARDENED.
 - SCRAPE OFF HARDENED MORTAR WITH A PIECE OF SIMILAR MASONRY UNIT OR A WOODEN PADDLE. USE OF METAL SCRAPERS OR BRUSHES IS NOT PERMITTED.
 - AFTER MORTAR HAS CURED, CLEAN WITH WATER AND A STIFF BRUSH, IF NEEDED. DO NOT USE ACID SOLUTIONS OR MASONRY CLEANING SOLUTIONS UNLESS APPROVED IN WRITING BY ENGINEER.
- APPLICATION OF PENETRATING CONCRETE SURFACE COATING
 - APPLY THE COATING TO ALL EXPOSED EXTERIOR MASONRY AND CONCRETE SURFACES.
 - REFER TO SPECIAL PROVISIONS FOR DETAILS.

ALTERNATE 1

DTMB FILE NO. 591_22274.MNB



STATE OF MICHIGAN
DEPARTMENT OF TECHNOLOGY, MANAGEMENT AND BUDGET
STATE FACILITIES ADMINISTRATION
DESIGN AND CONSTRUCTION DIVISION
ADAM P. LACH, RA, DIRECTOR



NTH Consultants, Ltd.

Infrastructure Engineering
Environmental Services
Facilities Engineering

www.nthconsultants.com

Northville, MI Lansing, MI
Detroit, MI Grand Rapids, MI
Livonia, MI (Laboratory)

3 WORKING DAYS
BEFORE YOU DIG
CALL MISS DIG
1-800-482-7171
For the location of public utility lines.

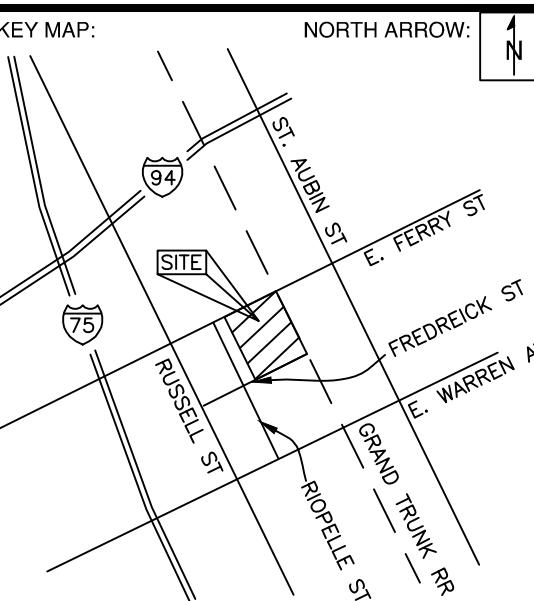
ALTERNATE NUMBER (811)
COLOR CODES FOR UTILITY LOCATING:

Yellow	Oil & Gas	Blue	Water
Orange	Propane & City	Green	Storm Drain
Red	Electric	Brown	Sanitary
Pink	For Surveying	Grey	Surfing

IF YOU ARE GOING TO WORK NEAR OVERHEAD WIRES - CALL MISS DIG



SEAL/STAMP:



REVISION BLOCK	
REV	DATE: DESCRIPTION

SUBMITTAL LOG	
DATE	PACKAGE NAME
2023-12-19	75% DRAWINGS
2024-03-06	90% DRAWINGS
2025-01-31	ISSUED FOR BID

PROJECT NAME:
**MDOT DETROIT GARAGE
STORM SEWER
RECONSTRUCTION**

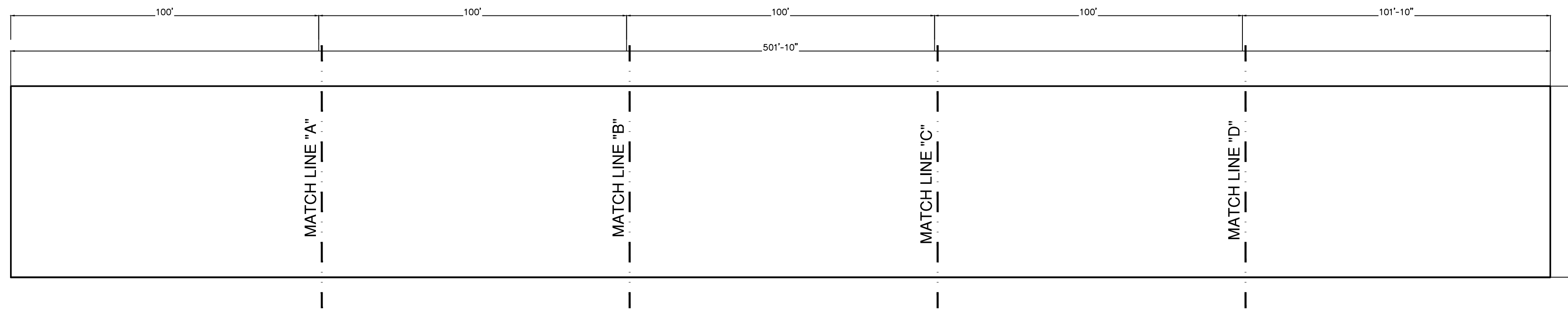
PROJECT LOCATION:
**1500 E. FERRY STREET
DETROIT, MICHIGAN**

DESIGNED BY:	NTH PROJECT NO.:
MAA	23001451
DRAWN BY:	SHEET SIZE:
MAA	ARCH D (24"x36")
CHECKED BY:	DATE:
JBS	08/19/2024
CAD FILE NAME:	
23001451	

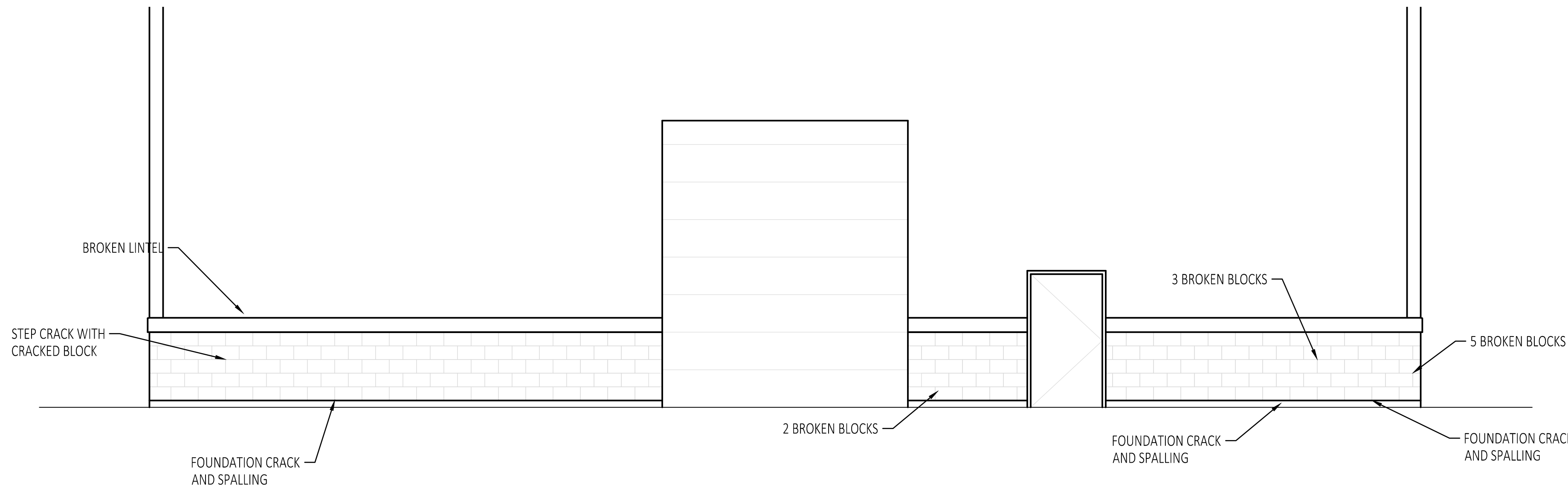
SHEET TITLE:
**EXTERIOR ELEVATIONS
DEFECT LOCATIONS
(1 OF 3)**

SHEET NUMBER:

R-103

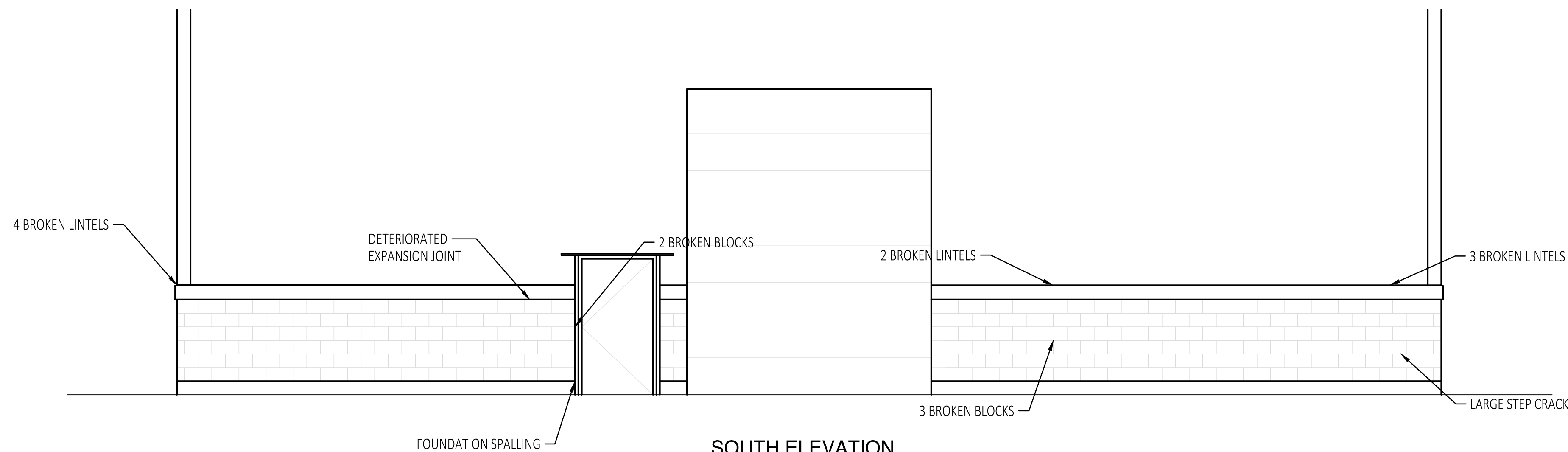
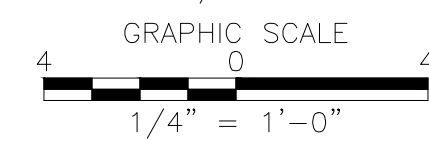


PLANVIEW WITH MATCHLINE LOCATIONS



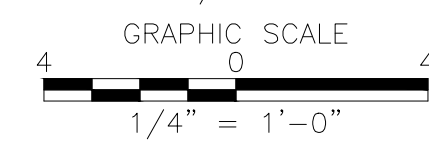
NORTH ELEVATION

SCALE: 1/4" = 1'-0"



SOUTH ELEVATION

SCALE: 1/4" = 1'-0"



NOTES:

- REPAIR LOCATIONS FOR SCOPE ITEMS WILL BE IDENTIFIED IN FIELD BY THE ENGINEER AND CONTRACTOR. THE QUANTITIES AND LOCATIONS WILL BE DOCUMENTED AFTER THE ENGINEER INSPECTS AND APPROVES THE COMPLETED REPAIRS.

ALTERNATE 1

DTMB FILE NO. 591 22274.MNB



STATE OF MICHIGAN
DEPARTMENT OF TECHNOLOGY, MANAGEMENT AND BUDGET
STATE FACILITIES ADMINISTRATION
DESIGN AND CONSTRUCTION DIVISION
ADAM P. LACH, RA, DIRECTOR



NTH Consultants, Ltd.

Infrastructure Engineering
Environmental Services
Facilities Engineering

www.nthconsultants.com

Northville, MI Lansing, MI
Detroit, MI Grand Rapids, MI
Livonia, MI (Laboratory)

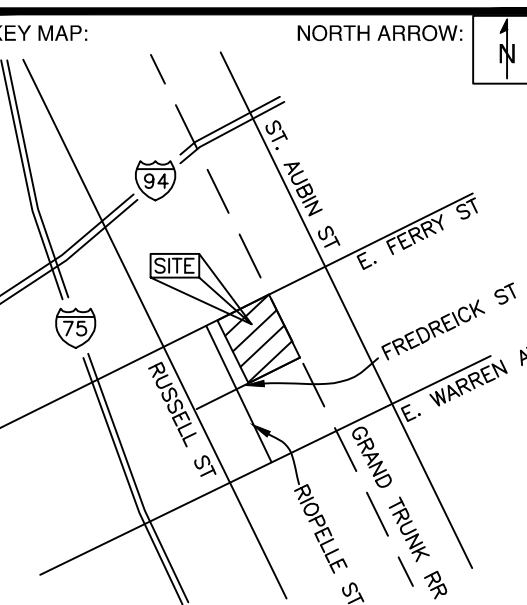
3 WORKING DAYS
**BEFORE YOU DIG
CALL MISS DIG
1-800-482-7171**
For the location of public utility lines.
ALTERNATE NUMBER (811)
COLOR CODES FOR UTILITY LOCATING:

Yellow	Oil & Gas	Blue	Water
Orange	Phone & Cable	Green	Storm Drain
Red	Electric	Brown	Sanitary Sewer
Pink	Fire	Purple	Surfing

IF YOU ARE GOING TO WORK NEAR OVERHEAD WIRES - CALL MISS DIG



SEAL/STAMP:



REVISION BLOCK

REV	DATE	DESCRIPTION

SUBMITTAL LOG

DATE	PACKAGE NAME
2023-12-19	75% DRAWINGS
2024-03-06	90% DRAWINGS
2025-01-31	ISSUED FOR BID

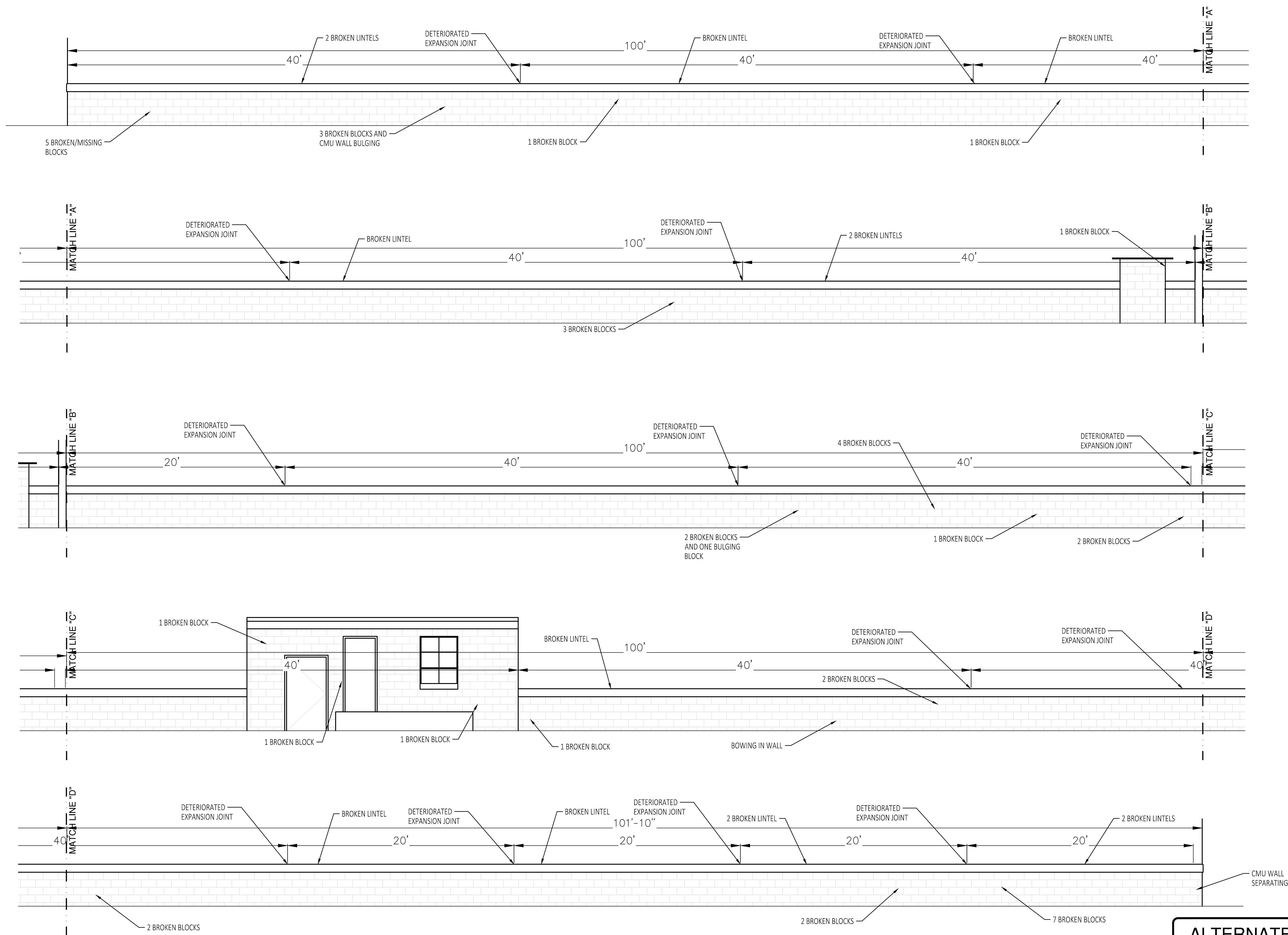
PROJECT NAME:
**MDOT DETROIT GARAGE
STORM SEWER
RECONSTRUCTION**

PROJECT LOCATION:
**1500 E. FERRY STREET
DETROIT, MICHIGAN**

DESIGNED BY:	NTH PROJECT NO.:
MAA	23001451
DRAWN BY:	SHEET SIZE:
MAA	ARCH D (24"x36")
CHECKED BY:	DATE:
JBS	08/19/2024
CAD FILE NAME:	
23001451	

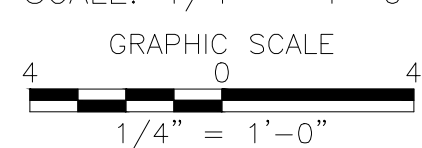
SHEET TITLE:
**EXTERIOR ELEVATIONS
DEFECT LOCATIONS
(2 OF 3)**

SHEET NUMBER:
R-104



EAST ELEVATION

SCALE: 1/4" = 1'-0"



NOTES:

- REPAIR LOCATIONS FOR SCOPE ITEMS WILL BE IDENTIFIED IN FIELD BY THE ENGINEER AND CONTRACTOR. THE QUANTITIES AND LOCATIONS WILL BE DOCUMENTED AFTER THE ENGINEER INSPECTS AND APPROVES THE COMPLETED REPAIRS.
- NOTED DISTANCES ARE THE MEASURED DISTANCE FROM EXPANSION JOINT TO EXPANSION JOINT AT THE BUILDING EXTERIOR WALL

DTMB FILE NO. 591 22274.MNB



STATE OF MICHIGAN
DEPARTMENT OF TECHNOLOGY, MANAGEMENT AND BUDGET
STATE FACILITIES ADMINISTRATION
DESIGN AND CONSTRUCTION DIVISION
ADAM P. LACH, RA, DIRECTOR

D:\2023\23001451\production\exterior_elevations\23001451.dwg Plotter: 1/21/2025 4:15 PM by Kate Houston



NTH Consultants, Ltd.

Infrastructure Engineering
Environmental Services
Facilities Engineering
www.nthconsultants.com

Northville, MI Lansing, MI
Detroit, MI Grand Rapids, MI
Livonia, MI (Laboratory)

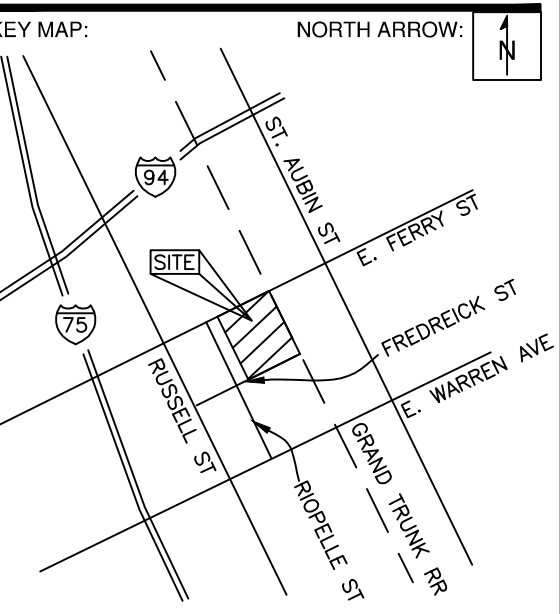
3 WORKING DAYS
**BEFORE YOU DIG
CALL MISS DIG
1-800-482-7171**
For the location of public utility lines.
ALTERNATE NUMBER (811)
COLOR CODES FOR UTILITY LOCATING:

Yellow	Oil & Gas	Blue	Water
Orange	Phone & Cable	Green	Storm Drain
Red	Electric	Brown	Sanitary
Purple	Gas	Black	Surfing

IF YOU ARE GOING TO WORK NEAR OVERHEAD WIRES - CALL MISS DIG



SEAL/STAMP:



REVISION BLOCK	
REV	DATE: DESCRIPTION

SUBMITTAL LOG	
DATE	PACKAGE NAME
2023-12-19	75% DRAWINGS
2024-03-06	90% DRAWINGS
2025-01-31	ISSUED FOR BID

PROJECT NAME:
**MDOT DETROIT GARAGE
STORM SEWER
RECONSTRUCTION**

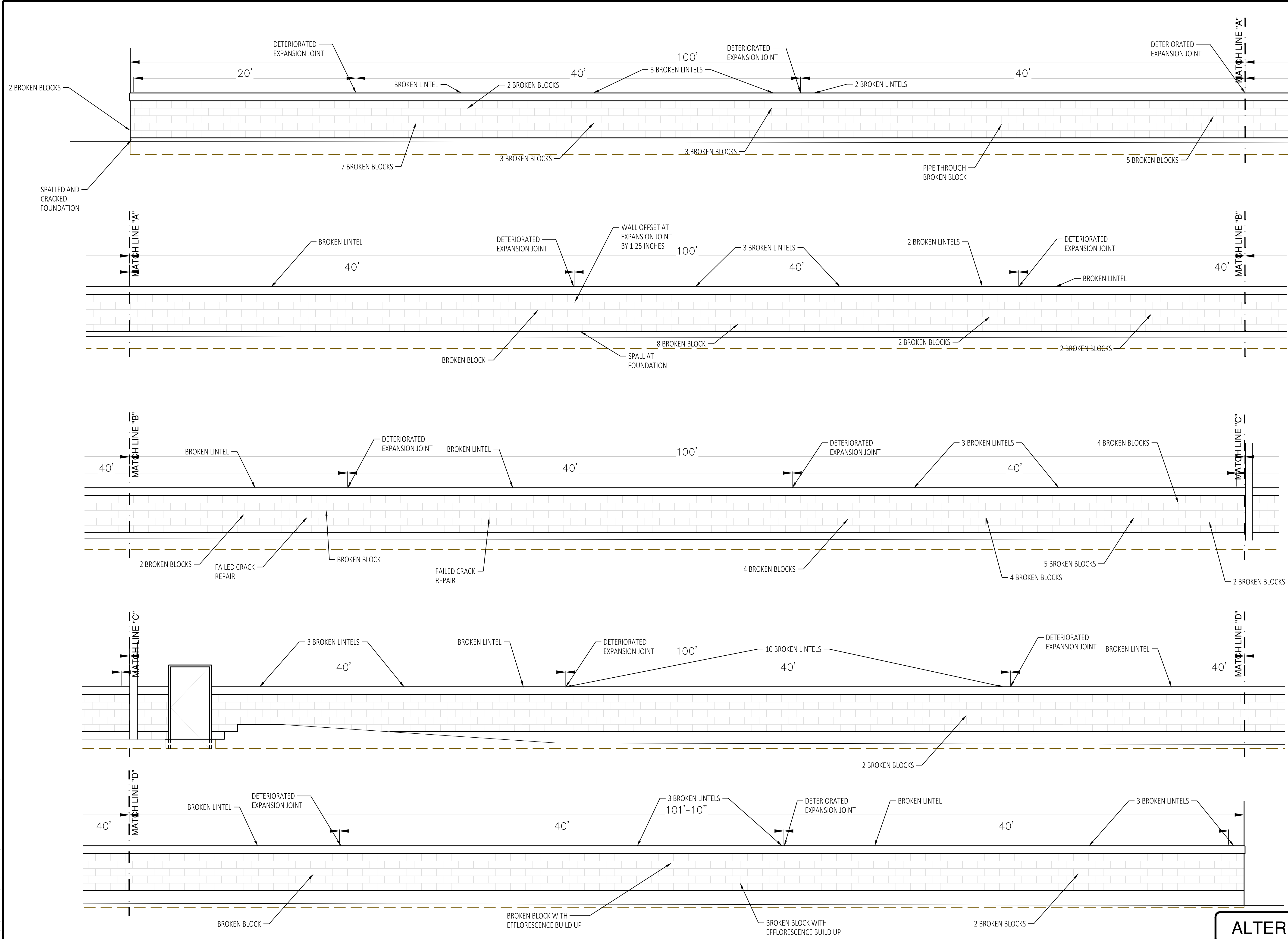
PROJECT LOCATION:
**1500 E. FERRY STREET
DETROIT, MICHIGAN**

DESIGNED BY:	NTH PROJECT NO.:
MAA	23001451
DRAWN BY:	SHEET SIZE:
MAA	ARCH D (24"x36")
CHECKED BY:	DATE:
JBS	08/19/2024
CAD FILE NAME:	
23001451	

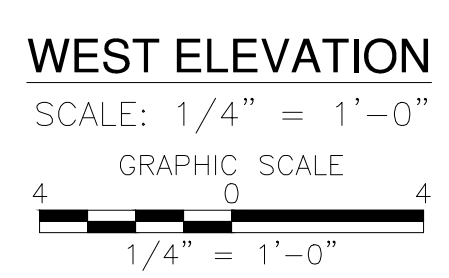
SHEET TITLE:
**EXTERIOR ELEVATIONS
DEFECT LOCATIONS
(3 OF 3)**

SHEET NUMBER:

R-105



- NOTES:**
- REPAIR LOCATIONS FOR SCOPE ITEMS WILL BE IDENTIFIED IN FIELD BY THE ENGINEER AND CONTRACTOR. THE QUANTITIES AND LOCATIONS WILL BE DOCUMENTED AFTER THE ENGINEER INSPECTS AND APPROVES THE COMPLETED REPAIRS.
 - NOTED DISTANCES ARE THE MEASURED DISTANCE FROM EXPANSION JOINT TO EXPANSION JOINT AT THE BUILDING EXTERIOR WALL



ALTERNATE 1

DTMB FILE NO. 591 22274.MNB

STATE OF MICHIGAN
DEPARTMENT OF TECHNOLOGY, MANAGEMENT AND BUDGET
STATE FACILITIES ADMINISTRATION
DESIGN AND CONSTRUCTION DIVISION
ADAM P. LACH, RA, DIRECTOR

D:\2023\23001451\production\exterior_elevations\23001451.dwg Plotter: 1/31/2025 4:15 PM by Kate Houston



NTH Consultants, Ltd.

Infrastructure Engineering
Environmental Services
Facilities Engineering

www.nthconsultants.com

Northville, MI Lansing, MI
Detroit, MI Grand Rapids, MI
Livonia, MI (Laboratory)

3 WORKING DAYS
BEFORE YOU DIG
CALL MISS DIG
1-800-482-7171
For the location of public utility lines.

ALTERNATE NUMBER (811)
COLOR CODES FOR UTILITY LOCATING:

Yellow	Oil & Gas	Blue	Water
Orange	Phone & Cable	Green	Storm Drain
Red	Electric	Brown	Sanitary Sewer
Pink	Fire	Grey	Surfing

IF YOU ARE GOING TO WORK NEAR OVERHEAD WIRES - CALL MISS DIG



SEAL/STAMP:



REVISION BLOCK

REV	DATE	DESCRIPTION

SUBMITTAL LOG

DATE	PACKAGE NAME
2023-12-19	75% DRAWINGS
2024-03-06	90% DRAWINGS
2025-01-31	ISSUED FOR BID

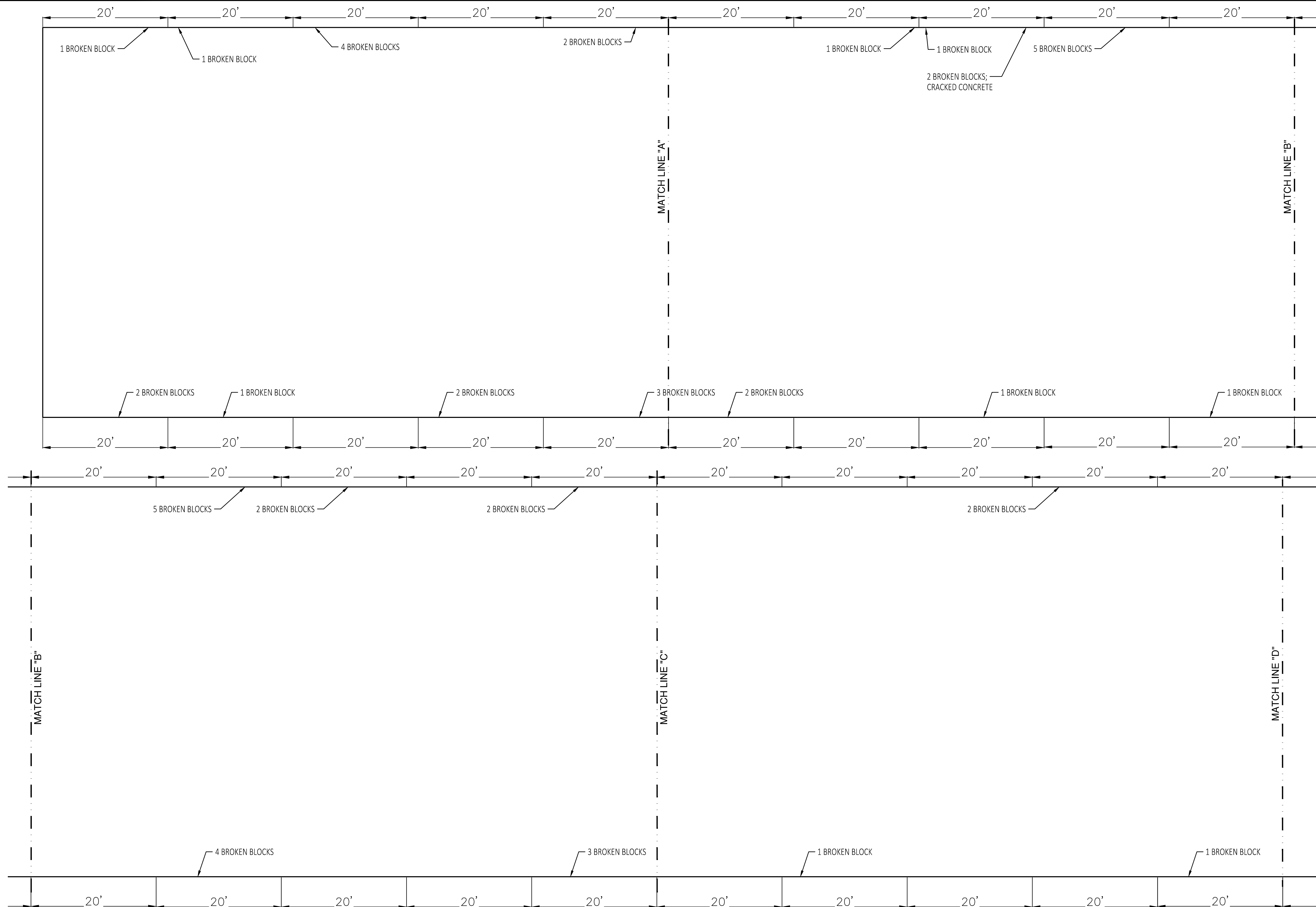
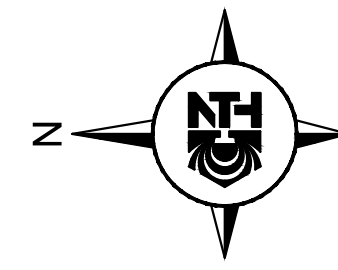
PROJECT NAME:
**MDOT DETROIT GARAGE
STORM SEWER
RECONSTRUCTION**

PROJECT LOCATION:
**1500 E. FERRY STREET
DETROIT, MICHIGAN**

DESIGNED BY:	NTH PROJECT NO.:
MAA	23001451
DRAWN BY:	SHEET SIZE:
MAA	ARCH D (24"x36")
CHECKED BY:	DATE:
JBS	08/19/2024
CAD FILE NAME:	
23001451	

SHEET TITLE:
**INTERIOR ELEVATIONS
DEFECT LOCATIONS
(1 OF 2)**

SHEET NUMBER:
R-106



NOTES:

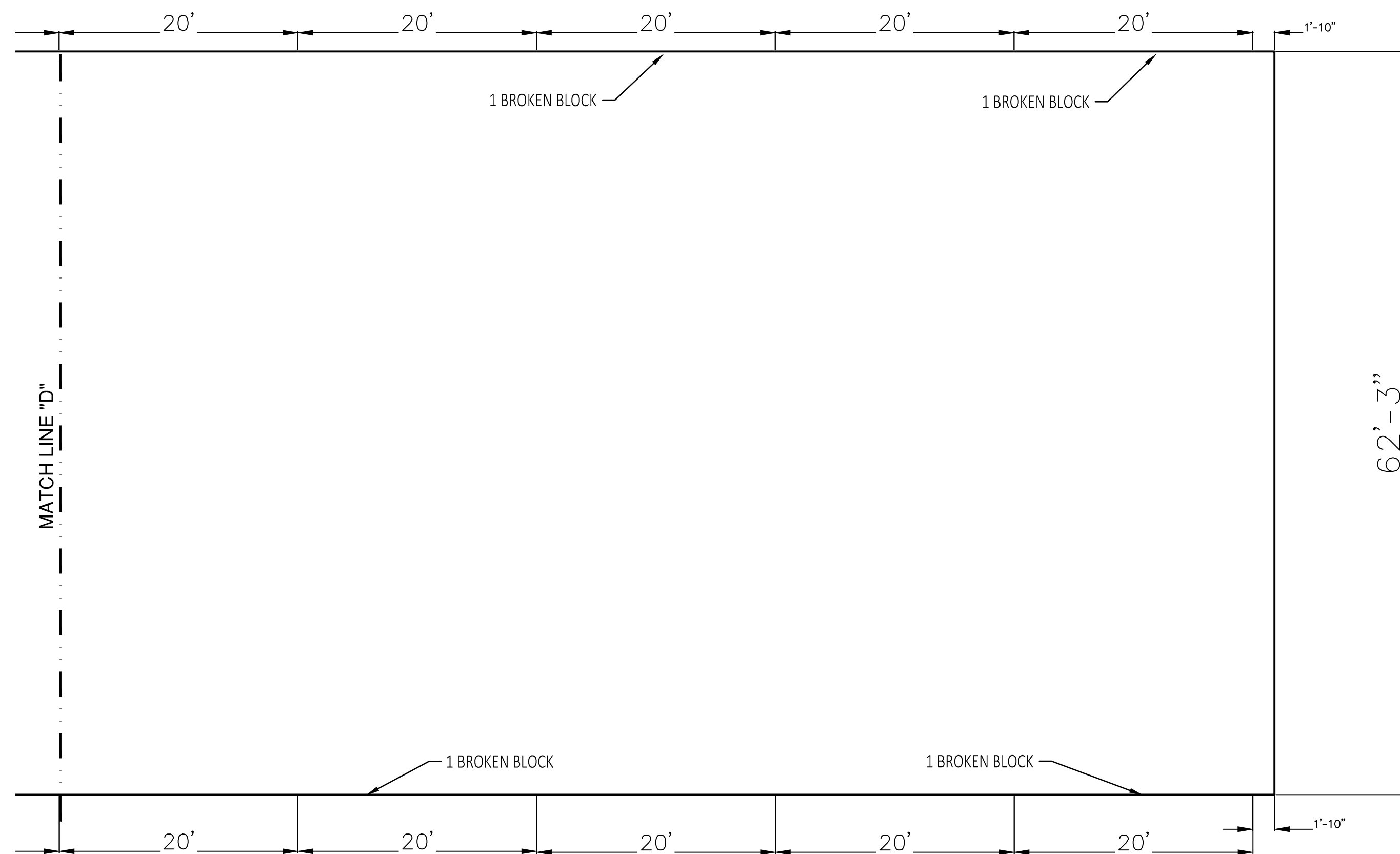
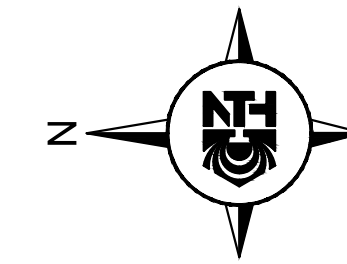
- REPAIR LOCATIONS FOR SCOPE ITEMS WILL BE IDENTIFIED IN FIELD BY THE ENGINEER AND CONTRACTOR. THE QUANTITIES AND LOCATIONS WILL BE DOCUMENTED AFTER THE ENGINEER INSPECTS AND APPROVES THE COMPLETED REPAIRS.
- DEFECT LOCATIONS FOR THE INTERIOR ARE SHOWN ON THE DRAWING FOR CLARITY; QUANTITIES FOR INTERIOR REPAIR ARE NOT REFLECTED IN THE QUANTITIES ON SHEET R-102 AND ARE NOT IN THE SCOPE OF REPAIRS.
- NOTED DISTANCES ARE THE MEASURED DISTANCE FROM COLUMN TO COLUMN AT THE BUILDING INTERIOR FRAME.

ALTERNATE 1

DTMB FILE NO. 591 22274.MNB

STATE OF MICHIGAN
DEPARTMENT OF TECHNOLOGY, MANAGEMENT AND BUDGET
STATE FACILITIES ADMINISTRATION
DESIGN AND CONSTRUCTION DIVISION
ADAM P. LACH, RA, DIRECTOR

D:\2023\23001451\production\seth\mtdet_garage_structural_repair\23001451.dwg Plotfile: 1/21/2025 4:15 PM by: Kate Houston



NOTES:

- REPAIR LOCATIONS FOR SCOPE ITEMS WILL BE IDENTIFIED IN FIELD BY THE ENGINEER AND CONTRACTOR. THE QUANTITIES AND LOCATIONS WILL BE DOCUMENTED AFTER THE ENGINEER INSPECTS AND APPROVES THE COMPLETED REPAIRS.
- DEFECT LOCATIONS FOR THE INTERIOR ARE SHOWN ON THE DRAWING FOR CLARITY; QUANTITIES FOR INTERIOR REPAIR ARE NOT REFLECTED IN THE QUANTITIES ON SHEET R-102 AND ARE NOT IN THE SCOPE OF REPAIRS.
- NOTED DISTANCES ARE THE MEASURED DISTANCE FROM COLUMN TO COLUMN AT THE BUILDING INTERIOR FRAME.

J:\2023\23001451\production\set\mxd\garage_repair\23001451.dwg Plotdate: 1/21/2025 4:15 PM by: Helen Houston

ALTERNATE 1

DTMB FILE NO. 591_22274.MNB



STATE OF MICHIGAN
DEPARTMENT OF TECHNOLOGY, MANAGEMENT AND BUDGET
STATE FACILITIES ADMINISTRATION
DESIGN AND CONSTRUCTION DIVISION
ADAM P. LACH, RA, DIRECTOR



NTH Consultants, Ltd.

Infrastructure Engineering
Environmental Services
Facilities Engineering
www.nthconsultants.com

Northville, MI Lansing, MI
Detroit, MI Grand Rapids, MI
Livonia, MI (Laboratory)

3 WORKING DAYS BEFORE YOU DIG CALL MISS DIG 1-800-482-7171
For free location of public utility lines. ALLOWANCE NUMBER (BTL) COLOR CODES FOR IDENTIFICATION:

Yellow	Oil & Gas	Blue	Water
Orange	Phone & Cable	Green	Storm Drain
Red	Electric	Brown	Sewer
		Pink	Sanitary

IF YOU ARE GOING TO WORK NEAR OVERHEAD WIRES ... CALL MISS DIG



SEAL/STAMP:



REVISION BLOCK	
REV	DATE: DESCRIPTION

SUBMITTAL LOG	
DATE	PACKAGE NAME
2023-12-19	75% DRAWINGS
2024-03-06	90% DRAWINGS
2025-01-31	ISSUED FOR BID

PROJECT NAME:
MDOT DETROIT GARAGE STORM SEWER RECONSTRUCTION

PROJECT LOCATION:
**1500 E. FERRY STREET
DETROIT, MICHIGAN**

DESIGNED BY: MAA	NTH PROJECT NO.: 23001451
DRAWN BY: MAA	SHEET SIZE: ARCH D (24"x36")
CHECKED BY: JBS	DATE: 08/19/2024
CAD FILE NAME: 23001451	

SHEET TITLE:
**INTERIOR ELEVATIONS
DEFECT LOCATIONS
(2 OF 2)**

SHEET NUMBER:
R-107



NTH Consultants, Ltd.

Infrastructure Engineering
Environmental Services
Facilities Engineering
www.nthconsultants.com

Northville, MI Lansing, MI
Detroit, MI Grand Rapids, MI
Livonia, MI (Laboratory)

3 WORKING DAYS
**BEFORE YOU DIG
CALL MISS DIG**
1-800-482-7171

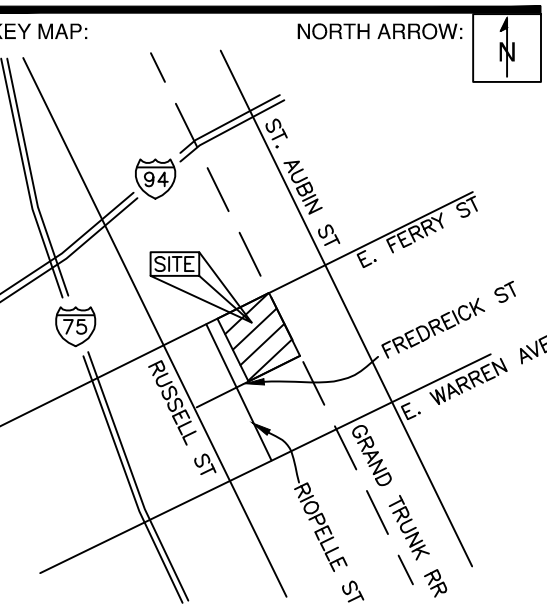
For free location of public utility lines.
ALTERNATE NUMBER 0113
COLOR CODES FOR UTILITY LOCATING:

Yellow	Gas	Blue	Water
Orange	Electric	Green	Storm Drain
Red	Phone or Cable	Pink	Sanitary

IF YOU ARE GOING TO WORK NEAR OVERHEAD WIRES - CALL MISS DIG



SEAL/STAMP:



REVISION BLOCK	
REV	DATE: DESCRIPTION

SUBMITTAL LOG	
DATE	PACKAGE NAME
2023-12-19	75% DRAWINGS
2024-03-06	90% DRAWINGS
2025-01-31	ISSUED FOR BID

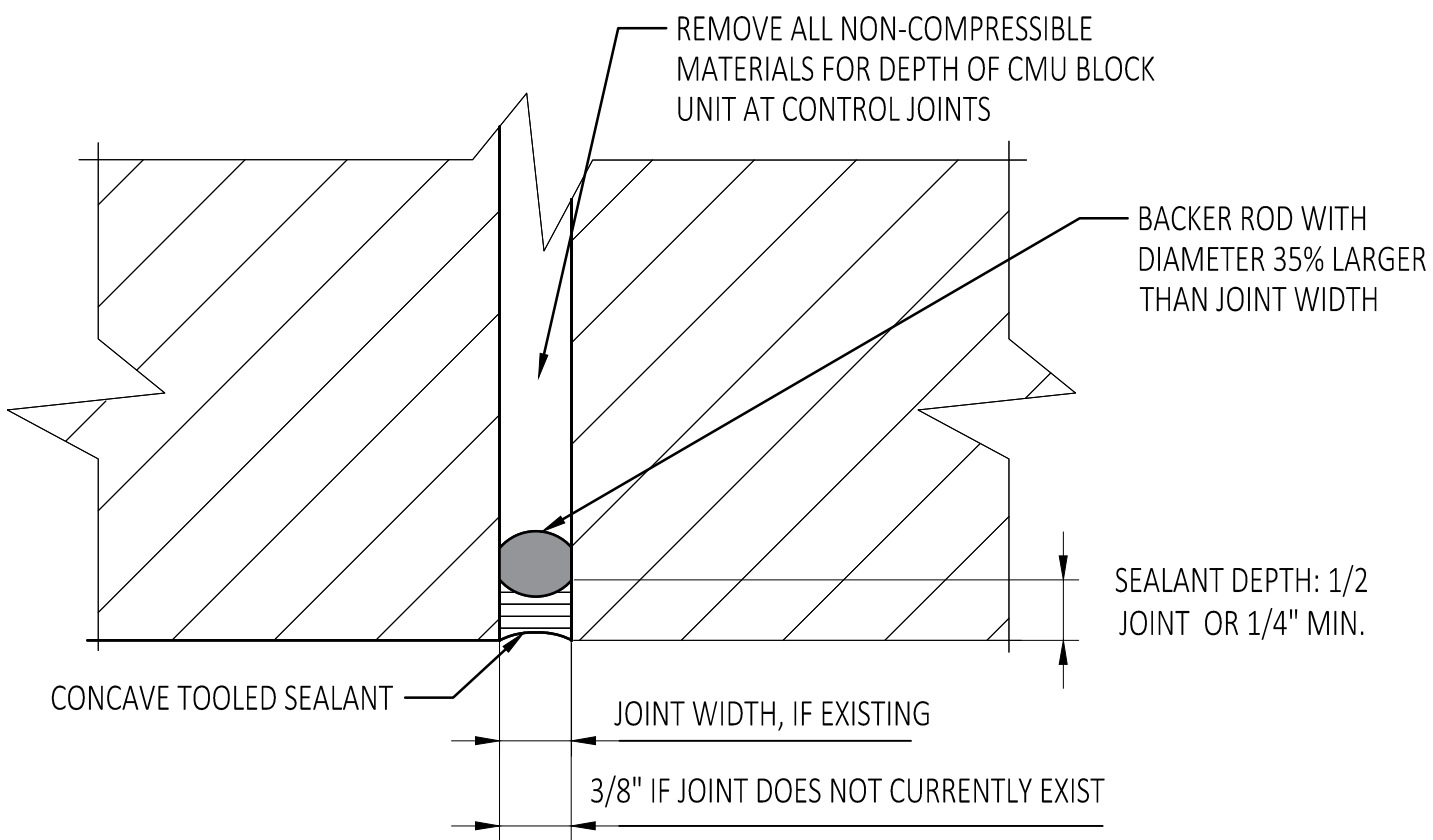
PROJECT NAME:
**MDOT DETROIT GARAGE
STORM SEWER
RECONSTRUCTION**

PROJECT LOCATION:
**1500 E. FERRY STREET
DETROIT, MICHIGAN**

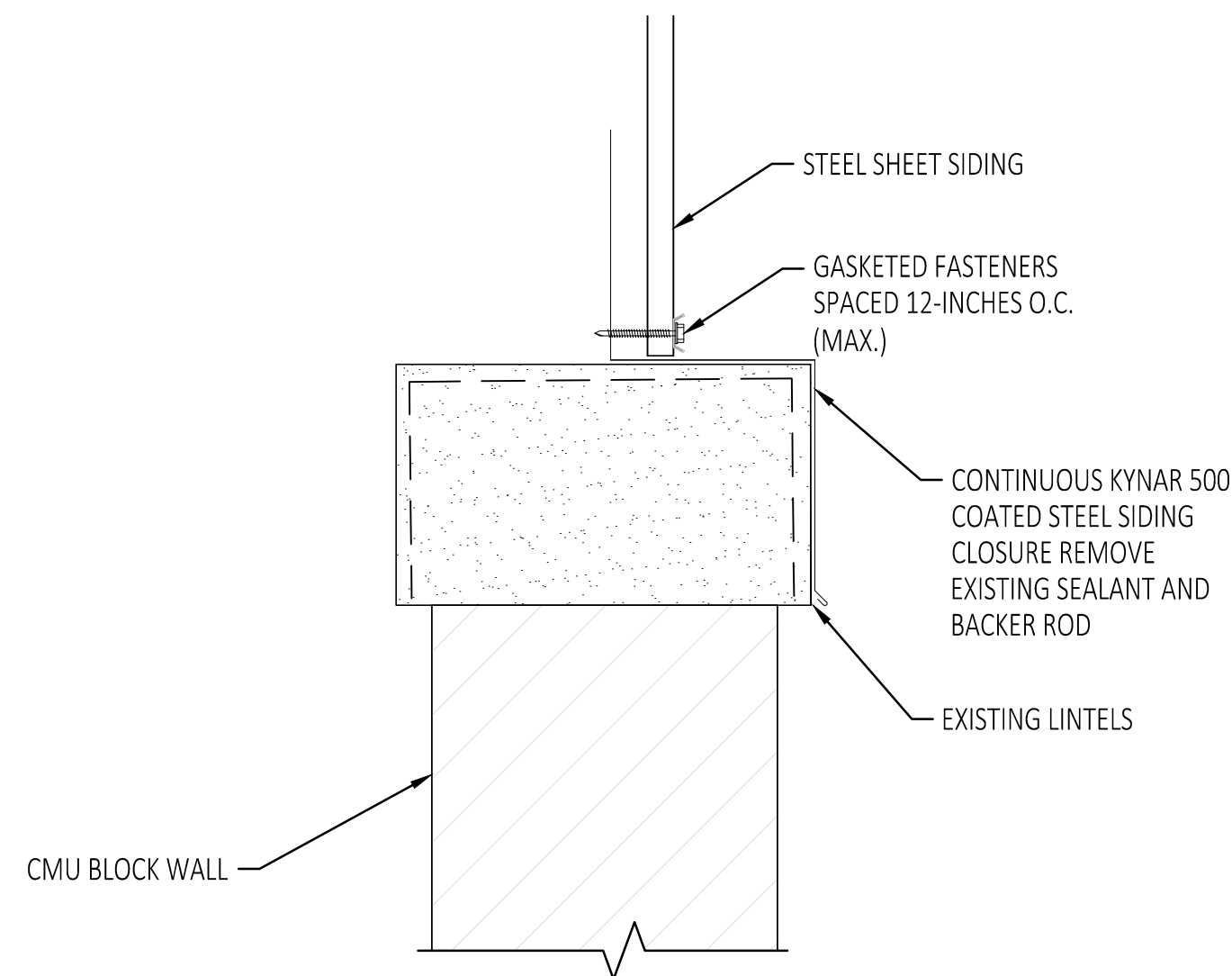
DESIGNED BY: MAA	NTH PROJECT NO.: 23001451
DRAWN BY: MAA	SHEET SIZE: ARCH D (24"x36")
CHECKED BY: JBS	DATE: 08/19/2024
CAD FILE NAME: 23001451	

SHEET TITLE:
REPAIR DETAILS

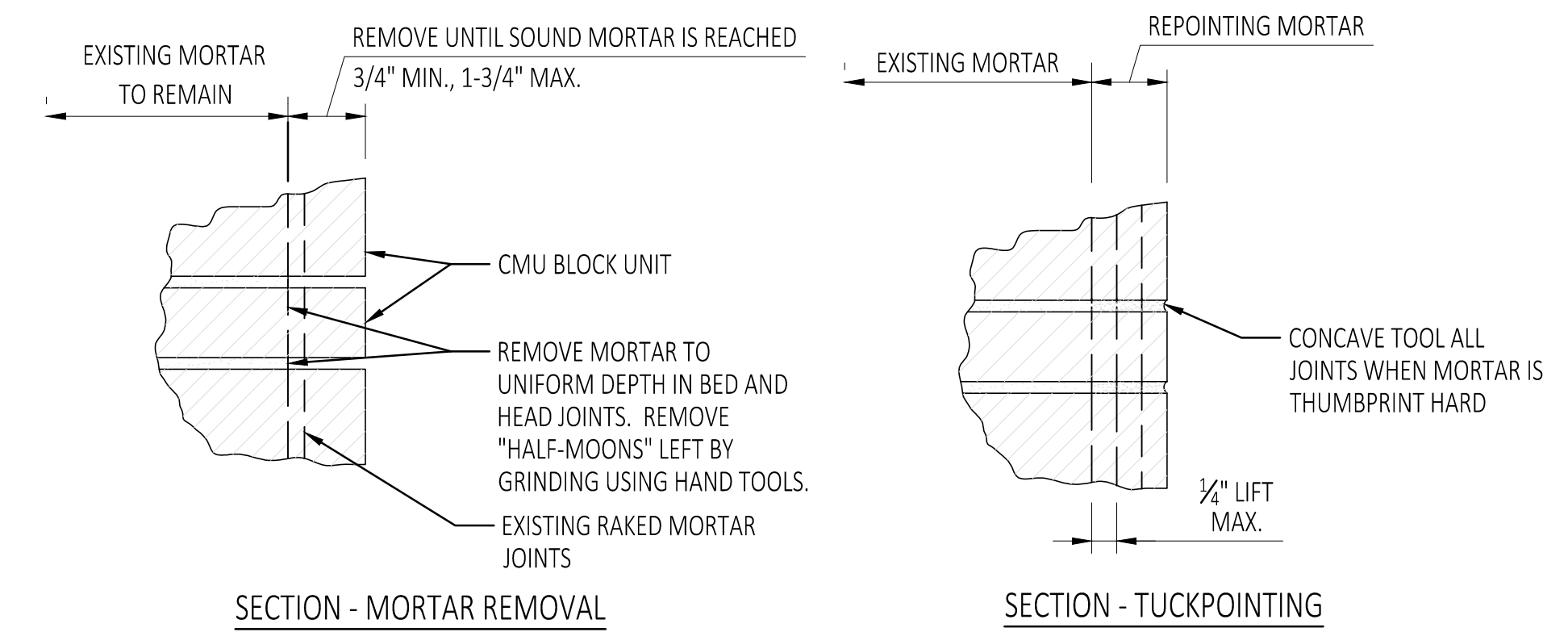
SHEET NUMBER:
R-108



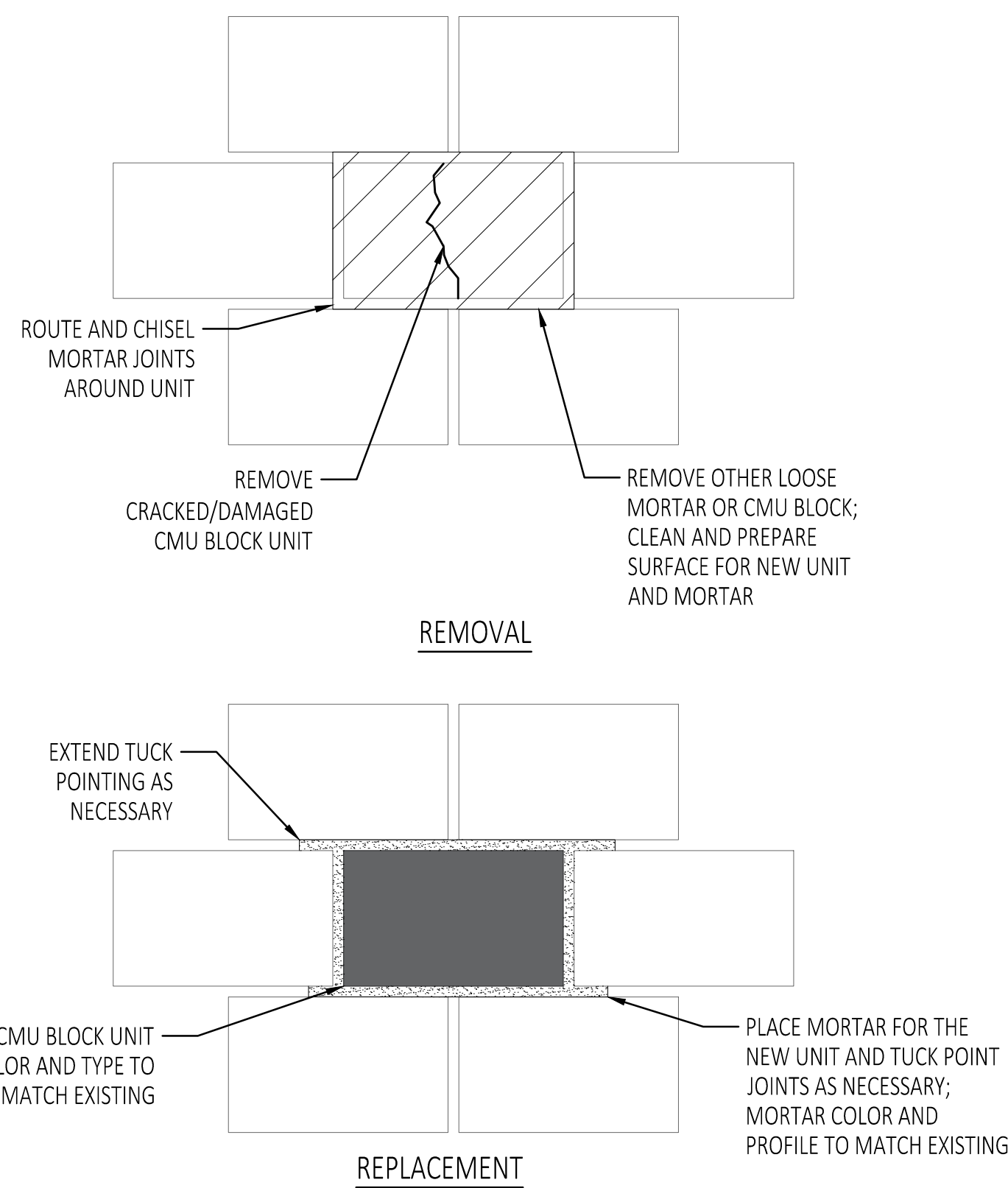
1
R-108 NOT TO SCALE
CMU BLOCK FACADE CONTROL JOINT



3
R-108 NOT TO SCALE
PARAPET COPING SEALANT

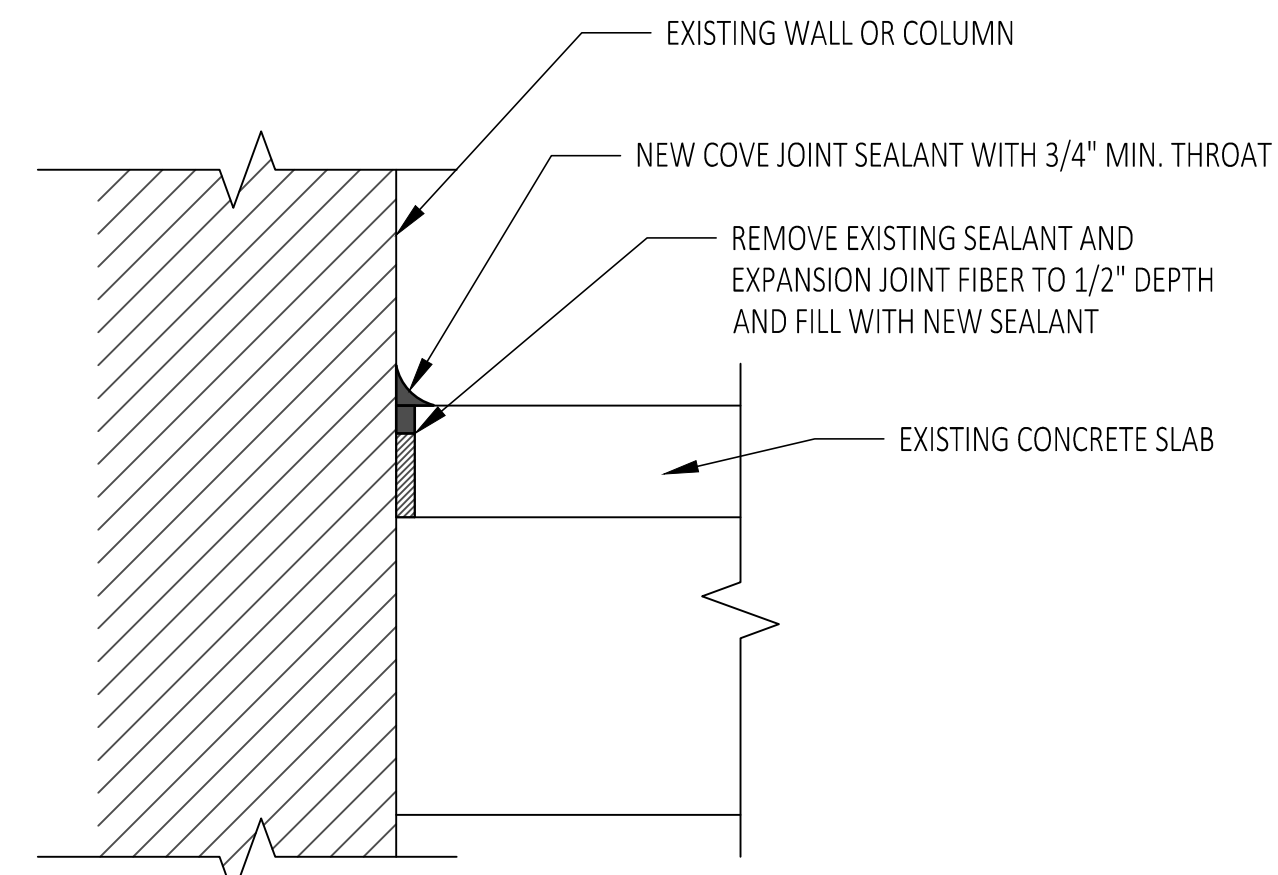


5
R-108 NOT TO SCALE
TUCKPOINTING DETAIL



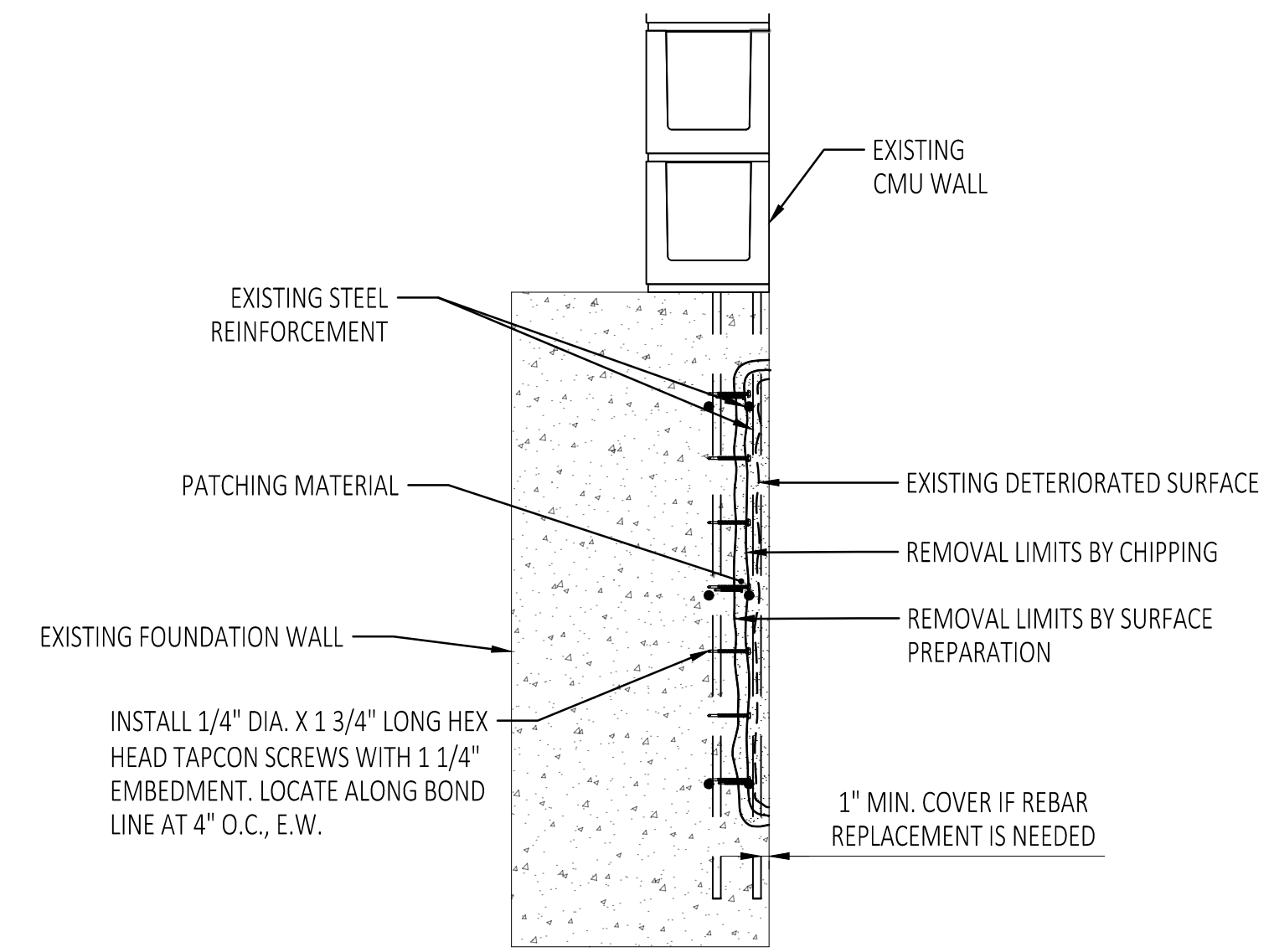
- NOTES:**
- SELECTIVE DEMOLITION AND REMOVAL SHALL BE IN ACCORDANCE WITH SECTION 02 41 16.
 - MASONRY REPLACEMENT SHALL BE IN ACCORDANCE WITH SECTION 04 01 20.91

2
R-108 NOT TO SCALE
CMU BLOCK REPLACEMENT DETAIL



- SEALANT REPLACEMENT NOTES:**
- REMOVE EXISTING SEALANT MATERIAL AND CLEAN JOINT OF DEBRIS OR OTHER RESIDUE FROM EXISTING SEALANT.
 - PREPARE CONCRETE SURFACES TO RECEIVE SEALANT IN ACCORDANCE WITH MANUFACTURER REQUIREMENTS.
 - IF JOINT CONTAINS EXPANSION FIBER MATERIAL, REMOVE EXCESS FIBER AS SHOWN ON DETAILS

4
R-108 NOT TO SCALE
SIDEWALK-BUILDING ISOLATION JOINT DETAIL



- NOTES**
- SAW CUT PERIMETER OF REPAIR AREA (1/2-INCH DEPTH). DO NOT CUT REINFORCING BARS. REMOVE CONCRETE UP TO 2-INCHES DEEP OR UNTIL THE EXISTING STEEL REINFORCEMENT IS EXPOSED.
 - PREPARE EXPOSED REINFORCING TO WHITE METAL CONDITION AND COAT ALL EXPOSED STEEL REINFORCEMENT WITH ANTI-CORROSION COATING AND ADD SUPPLEMENTAL STEEL WHERE DETERMINED NECESSARY BY THE ENGINEER (SEE DETAIL 5/6 FOR SUPPLEMENTAL STEEL).
 - INSTALL 1/4" DIA. X 1 3/4" LONG, HEX HEAD TAPCON SCREWS AT 4" O.C. EACH WAY WITH 1 1/4" EMBEDMENT (MIN. 1/2" CONCRETE COVER) AT PREPARED SURFACE AND AS ACCEPTABLE BY THE ENGINEER.
 - APPLY BONDING AGENT TO CLEAN CONCRETE AND CLEAN STEEL SURFACE IMMEDIATELY BEFORE PLACING REPAIR MORTAR.
 - PLACE MORTAR IN REPAIR AREA (MIX, POUR, AND CURE IN ACCORDANCE WITH THE MANUFACTURER'S SPECIFICATIONS).

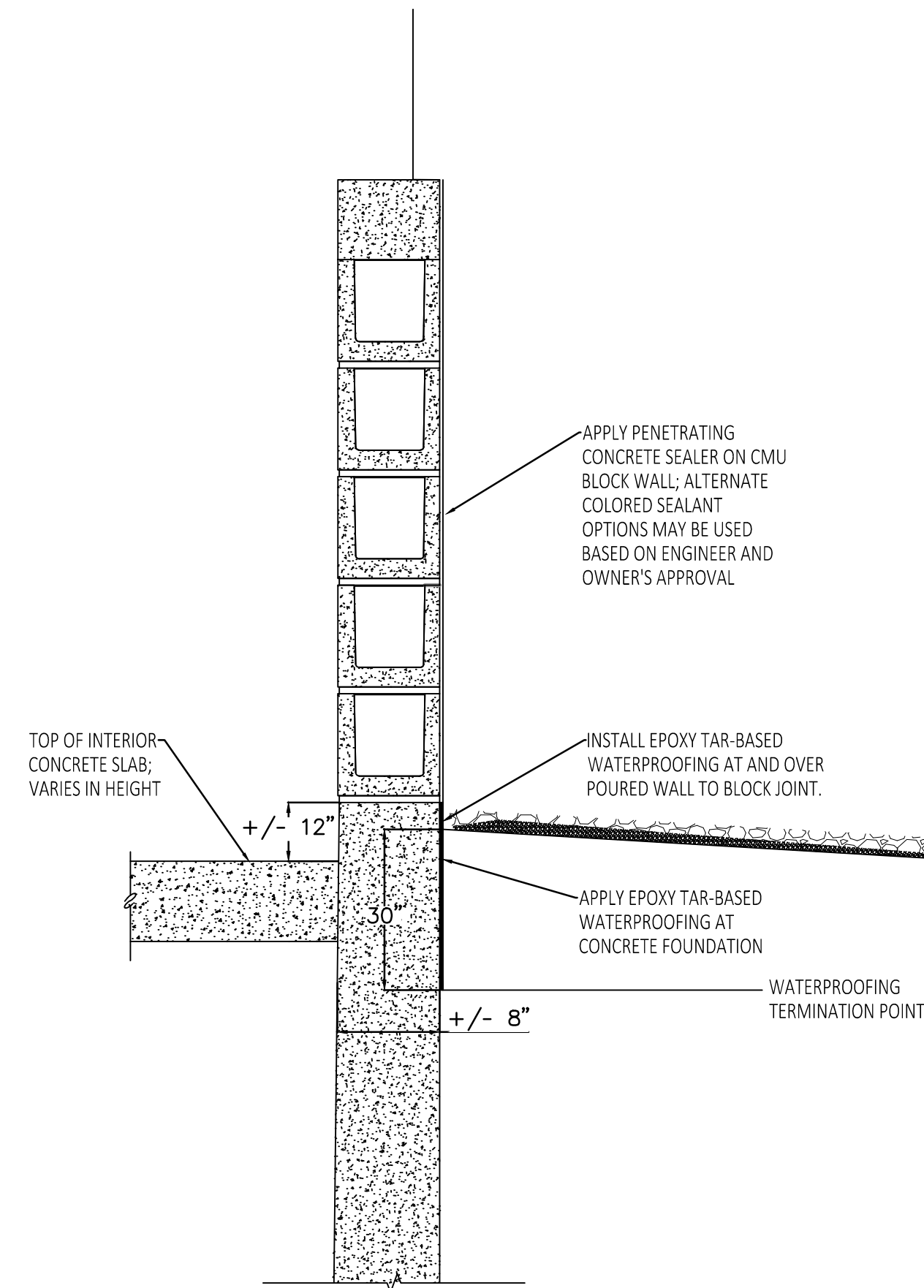
6
R-108 NOT TO SCALE
VERTICAL CONCRETE REPAIR

ALTERNATE 1

DTMB FILE NO. 591_22274.MNB

STATE OF MICHIGAN
DEPARTMENT OF TECHNOLOGY, MANAGEMENT AND BUDGET
STATE FACILITIES ADMINISTRATION
DESIGN AND CONSTRUCTION DIVISION
ADAM P. LACH, RA, DIRECTOR

J:\2025\23001451\production\set\print\23001451.dwg Plot Date: 1/21/2025 4:15 PM by: Kellen Howerton

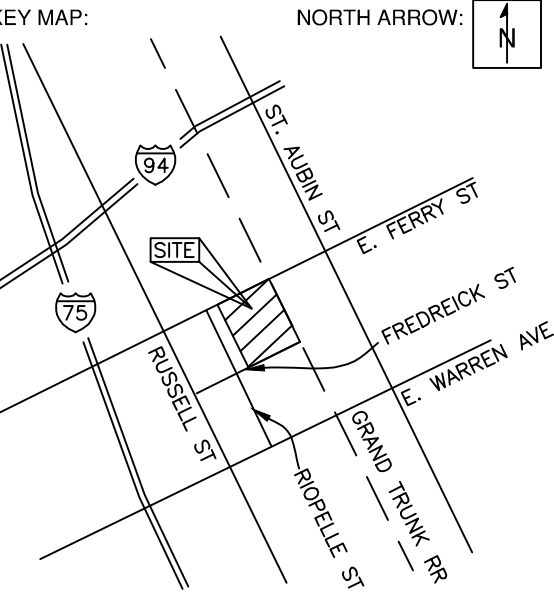


1 WATERPROOFING DETAIL
R-109 NOT TO SCALE

3 WORKING DAYS
BEFORE YOU DIG
CALL MISS DIG
 1-800-482-7171
 For free location of public utility lines.
 ALTERNATE NUMBER 0115
 COLOR CODES FOR UTILITY LOCATING:
 Yellow: Gas, Blue: WATER
 Orange: PROBE & CATCH, Green: STORM DRAIN
 Red: ELECTRIC, Pink: SINKING
 IF YOU ARE GOING TO WORK NEAR OVERHEAD WIRES ... CALL MISS DIG



SEAL/STAMP:



REVISION BLOCK

REV	DATE: DESCRIPTION

SUBMITTAL LOG

DATE	PACKAGE NAME
2023-12-19	75% DRAWINGS
2024-03-06	90% DRAWINGS
2025-01-31	ISSUED FOR BID

PROJECT NAME:
**MDOT DETROIT GARAGE
 STORM SEWER
 RECONSTRUCTION**

PROJECT LOCATION:
**1500 E. FERRY STREET
 DETROIT, MICHIGAN**

DESIGNED BY: MAA	NTH PROJECT NO.: 23001451
DRAWN BY: MAA	SHEET SIZE: ARCH D (24"x36")
CHECKED BY: JBS	DATE: 08/19/2024
CAD FILE NAME: 23001451	

SHEET TITLE:
REPAIR DETAILS

SHEET NUMBER:
R-109

ALTERNATE 1

J:\2023\23001451\production\set\mxd\garage_infrastructure_repair\23001451.dwg Plotdate: 1/21/2025 4:15 PM by: Helen Houston